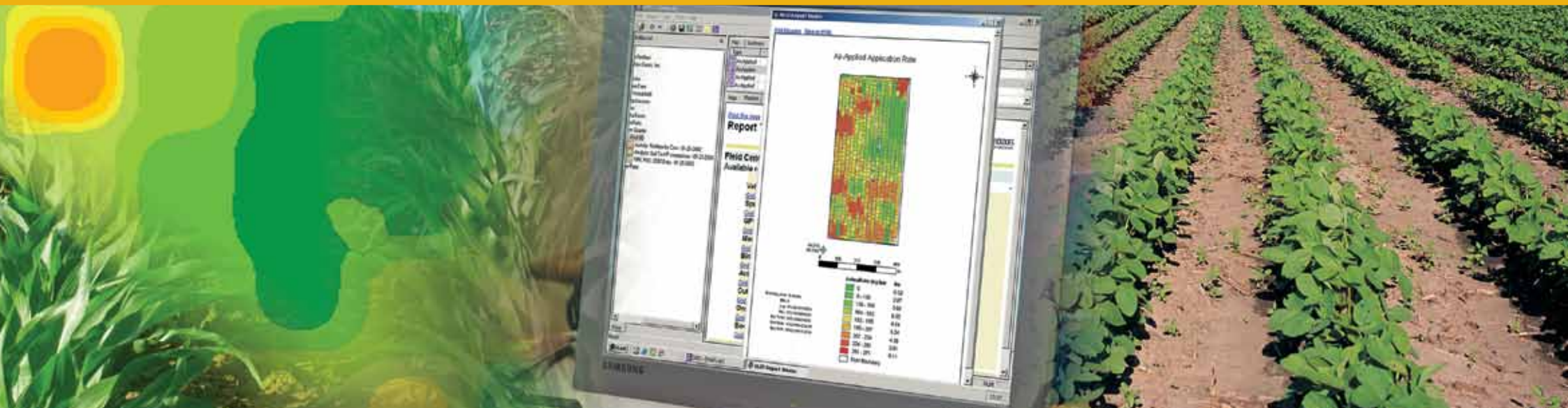


# SGISpro™

Data Management and Analysis Software  
for the Professional Agronomist



# **SGISpro™**

## Data Management and Analysis Software for the Professional Agronomist

**The market-leading software for agronomy service providers, SGISpro™ gives users a powerful, sophisticated tool for agricultural mapping and crop planning.**

As the “engine” behind your precision agriculture effort, SGISpro delivers insight, puts you in control and impacts profitability.

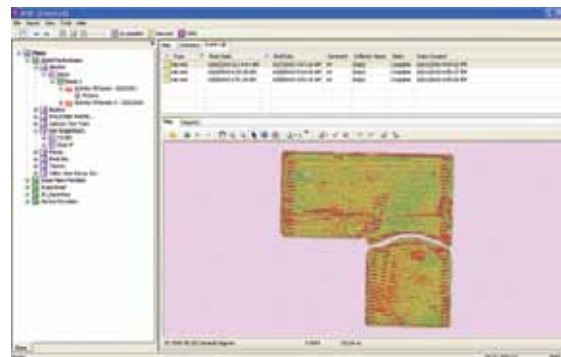
SGISpro converts yield, soil sample and other agricultural data into geo-referenced maps that professionals can use to better understand crop performance and make more accurate application plans. SGISpro users can more efficiently and effectively offer multi-product and variable-rate plans that are customized to growers’ local conditions and requirements. SGISpro software guides your agronomic and economic recommendations—and more profitable crop production decisions.



## Precision from Initial Data Import to Final Analysis

SGISpro imports data from many different source types, such as yield maps or soil samples, and guides the user through correction and customization of the information. The system then helps professionals generate application plans, written for specific implement controllers, which maximize yields and minimize appropriate resource use.

With SGISpro, for example, crop inputs such as nutrients are applied only to those areas of the field that need them and at the exact rate required for improving a particular crop yield and quality.



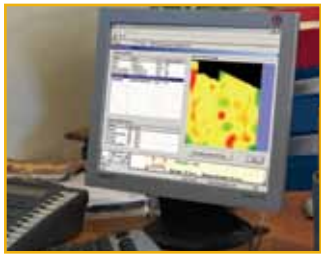
### Data Import

SGISpro software accepts data types and formats from a wide range of implement manufacturers. SGISpro templates and program wizards let you quickly import soil test data and spatial or relational information. And for accuracy, SGISpro applies data range filters as well as an automatic unit conversion capability.

The SGISpro system imports and manages grower information, by farm and field name, in a single database. Users can easily assign crops to fields for current and future record-keeping, and define individual map views. Additional features such as area measurement, map layering and management zones support the assignment of specific yield goals.

### Data Correction

The SGISpro harvest data processing option incorporates yield information into the decision-making process. A simple import wizard converts various data formats from combine monitoring systems. And other advanced features guide adjustments based on variables such as crop mass, moisture content and GPS delays. All of these features contribute toward more accurate yield maps.



## Agronomic Customization

A recommendation builder module lets you write rules tailored to your local requirements. Based on standards that you customize, these formulas or equations guide the development of application plans. This feature sets SGISpro apart in that it lets agronomists input their knowledge of local conditions and preferred crop husbandry practices.

## Application Plan Generation

Based on existing data and recommendations, SGISpro creates flat-rate or variable-rate application plans for either single or multiple products. For convenience and workflow efficiency, frequently-used plans can be saved for future use. SGISpro application plans can be used across a broad range of consoles such as the Topcon GX-45, X20 and X30 and virtually all other controllers, including the Falcon II / Falcon VT and the Viper pro. An as-applied feature maintains detailed application reports that serve as a record of the scope and quality of all application work that has been completed. These reports are created automatically every time that data is imported into the system.

## Profit Analysis

The SGISpro profit analysis calculator guides key management decisions on controllable crop inputs. SGISpro guides the user in evaluating profit potential, yield projection or other objectives. The profit analysis is just one example of the many user-defined reports SGISpro has to offer.



## SGISpro Computer System Requirements:

- 2.0 GHz processor or greater
- 1 GB RAM or greater
- 4 GB free hard drive space
- DVD-RW
- Color printer
- Microsoft XP Professional
- SD card reader
- Microsoft Internet Explorer 8.0 or greater
- Internet service and e-mail address

## SGISpro Computer System Recommendations:

- Dual-Core 2.3 GHz processor or greater
- 2 GB RAM or greater
- 150 GB hard drive or greater
- Windows Vista or Windows 7
- High-speed DSL or cable internet connection

## Built on ESRI Technology

- Industry-leading ESRI ArcGIS 10 components
- MS Access database, optional Geo-database conversion
- all data stored in an ESRI standard file geo-database, compatible with all ESRI GIS software products







# **SGIS<sup>pro</sup>**

Data Management and Analysis Software  
for the Professional Agronomist

The information contained in this publication is intended to be of a general nature only; specific operations may vary from the average, and both crop and machine management, as well as weather, are important factors in the end result.

**Topcon Precision Agriculture, SGIS**  
5850 Opus Parkway, Suite 225  
Minnetonka, MN 55343  
Phone: 952-912-8400  
Fax : 952-912-8401

**Topcon Precision Agriculture**  
16900 West 118th Terrace  
Olathe, KS 66061 USA  
Phone: 913-928-2630

**Topcon Precision Agriculture**  
14 Park Way  
Mawson Lakes, SA 5095 Australia  
Phone: +61-8-8203-3300  
Fax : +61-8-8203-3399

**Topcon Precision Agriculture**  
Avenida de la Industria 35  
Tres Cantos 28760, Spain  
Phone : +34-91-804-92-31  
Fax : +34-91-803-14-15

**Topcon Positioning Systems, Inc.**  
7400 National Drive,  
Livermore CA 94551 USA  
Phone: 925-245-8300  
Fax: 925-245-8599

**Topcon Corporation**  
75-1 Hasunuma-cho, Itabashi-ku  
Toyko 174-8580 Japan  
Phone: +81-3-5994-0671  
Fax: +81-3-5994-0672

[www.topconpa.com](http://www.topconpa.com)

Specifications subject to change without notice ©2012 Topcon Precision Agriculture All rights reserved P/N: 7010-1023